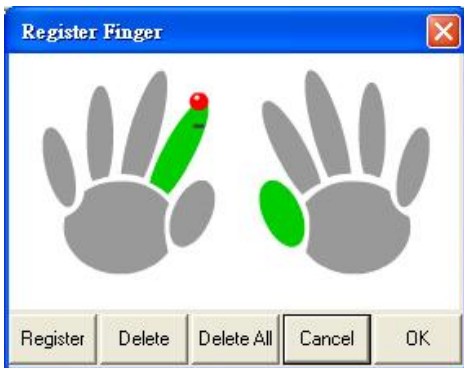
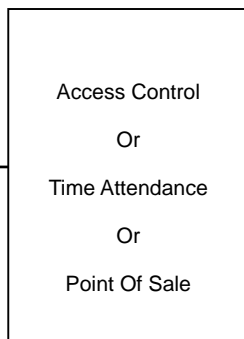




SF500/SF600



Fingerprint Software



Typical Application:

Replacing Existing Readers

Via Wiegand · ABA-TK2 or RS232 ◦

SmaFinger is a fingerprint reader developed on the so-call contactless smart card 13.56 Mhz RFID technology. The integration of biometric technology by fingerprint identification and 13.56Mhz RFID technology make Smafinger be capable of biometric and contactless performance without spending large amount of expenses in running system upgrading with fingerprint system extension. On the aspect of personal privacy issue, SmaFinger supply the high secure of protection on privacy concern due to every fingerprint is stored on a card. Also the reader itself supports Mifare MAD1/MAD2 format make user end be able to issue their customized ID cards.

Three Access Modes

- Card Only
- Card + Fingerprint
- Fingerprint only

Mode of Fingerprint only is also able to access functions of card enrollment and deletion. No need to apply extra on-line system or equipment to build up the fingerprint database.

Keynotes

- High secure of protection for loss of ID card (Unduplicated).
- Card + Fingerprint supports limitless fingerprint capacity.
- Featuring 3 interfaces in one devices - Wiegand, RS232 and ABA-TK2.
- Low risk of privacy intrusion
- Supports Mifare MAD 1/MAD 2 format, available for customized definitions and card issuing.

Applications

- Time attendance.
- Access control and Hotel locker management.
- Credit card or card cash.
- Membership card.
- Drive license or personal ID identification.
- Log in system.
- Wiegand devices or ABA-TK2 compatible.

SmaFinger Specifications:

Model No.		SF500	SF600	
Application		Standalone Mifare Sector Reader		
Access Mode	Card Only	Supported		
	Card + Fingerprint	Enroll Mode	No Need	
		Fingerprint Capacity	Unlimited	
		Fingerprint Validation	1:1	
		Performance	Security	
	Fingerprint Only	Enroll Mode	RS232 or Enroll Card	
		Fingerprint Capacity	10	1900
		Fingerprint Validation	1:10	1:N
		Performance	Friendly	
	Identification speed		<2 sec (1:1) <5 sec (1:10)	<1 sec (1:1) <3 sec (1:N)
Max Card Template Capacity		2		
Mifare Card Type		1K /4K		
Card Format		For MAD1/MAD2 Only		
Configurable Interface		RS232 : 2400~57600 bps Wiegand: 26~128 bits ABA-TK2: 2~24 Digital Codes		
Mifare Read Distance		Max. 50mm		
Power Consume		Max. 200mA @ DC12V		

Dimensions:

