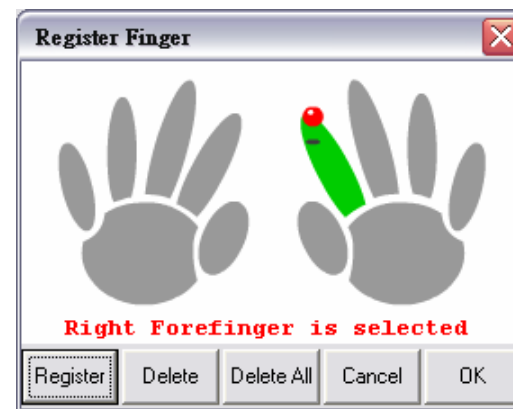


Introduction to SmaFinger Reader SF600



Intelligent Biometric Reader





What is SmaFinger Reader

- ◆ **SmaFinger.** Integration of biometric and 13.56Mhz Mifare technology.



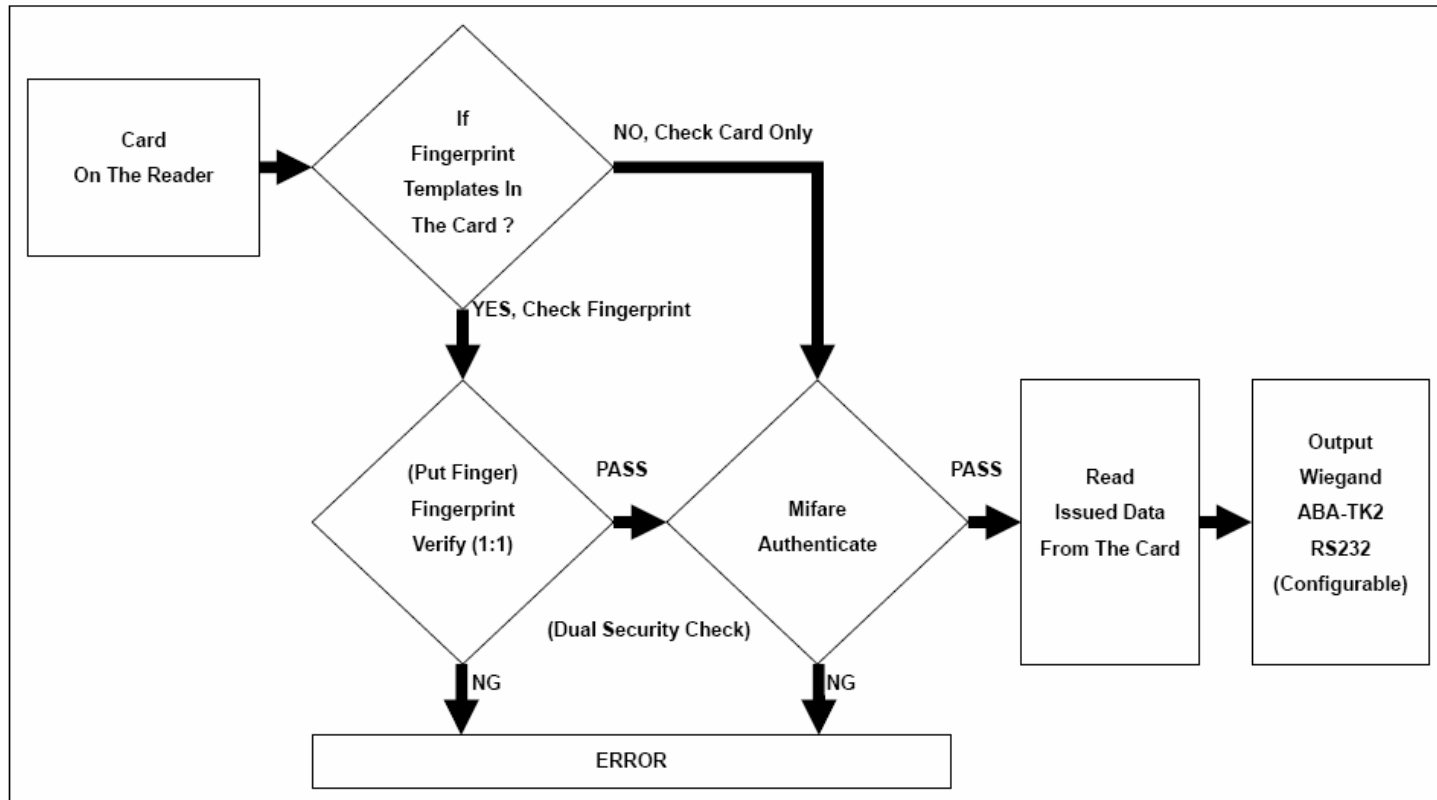
Features

- ◆ 3 Access Modes
 - Card Only
 - Card + Fingerprint
 - Fingerprint Only
- ◆ 3 In 1 Interface—RS232/Wiegand/ABA-TK2
- ◆ Support Mifare MAD, available for customized definition



How it work

Card-Only and Card+Fingerprint





Benefits

- ◆ Easy to upgrade existing system to Biometrics System.
- ◆ Off line card enrollment and deletion.
- ◆ High verification speed.
- ◆ Unduplicated for lost of ID card.
- ◆ Card + Fingerprint supports limitless users.



Applications

- ◆ Time attendance & Access control
- ◆ Cash card identification
- ◆ VIP Membership card
- ◆ Drive license or personal ID identification
- ◆ Log in system
- ◆ Security system



Structure of SmaFinger Reader



3 LED Lights Signal Feedback
(Blue/Green/Red)

Semi-Conductor Sensor (UPEK)

Build in Mifare Sector Reader
Mifare Card Type: 1K / 4K
Card Format: MAD1 / MAD2

Configurable Interface

RS232 : 2400~57600 bps

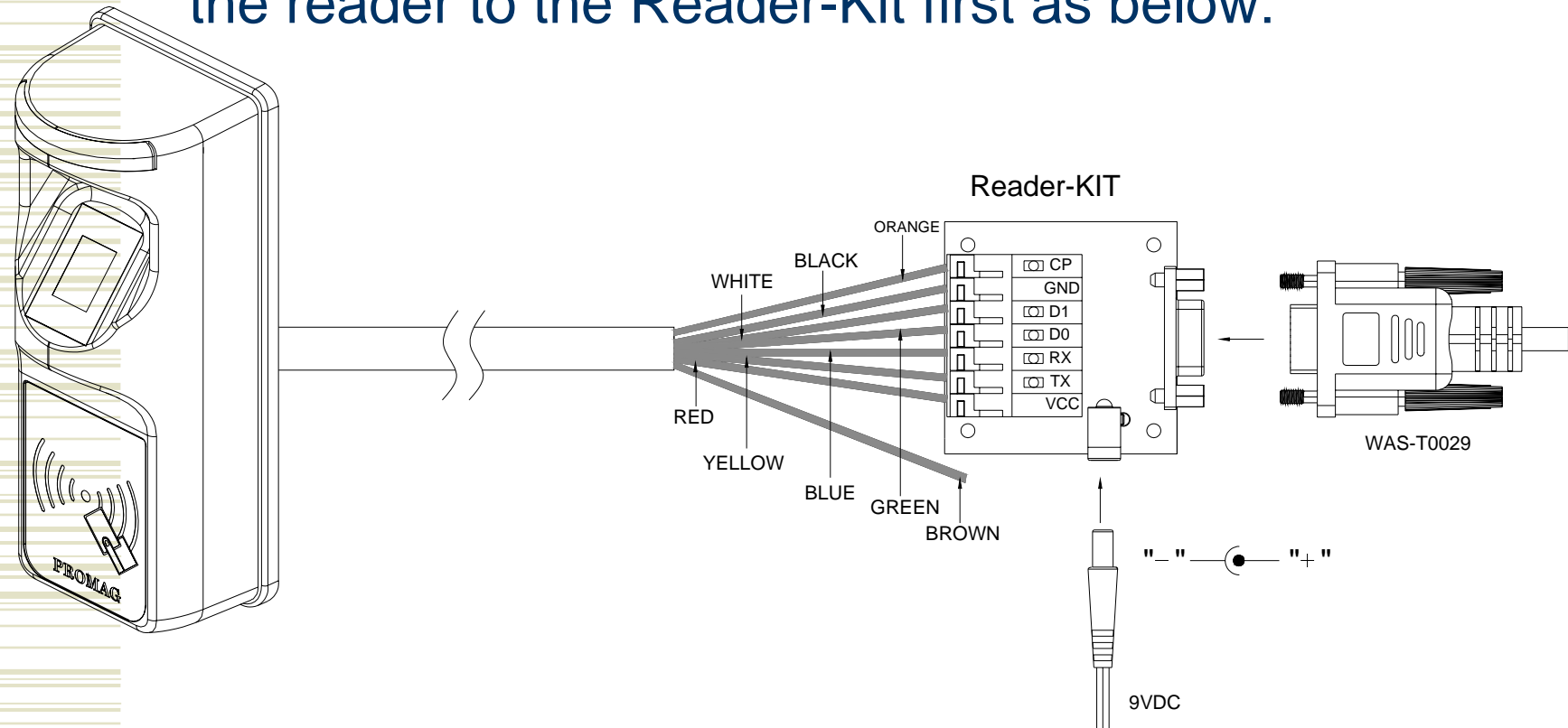
Wiegand: 26~128 bits

ABA-TK2: 1~24 Digital Codes



SmaFinger configuration

To configure the SmaFinger reader you need connect the reader to the Reader-Kit first as below:



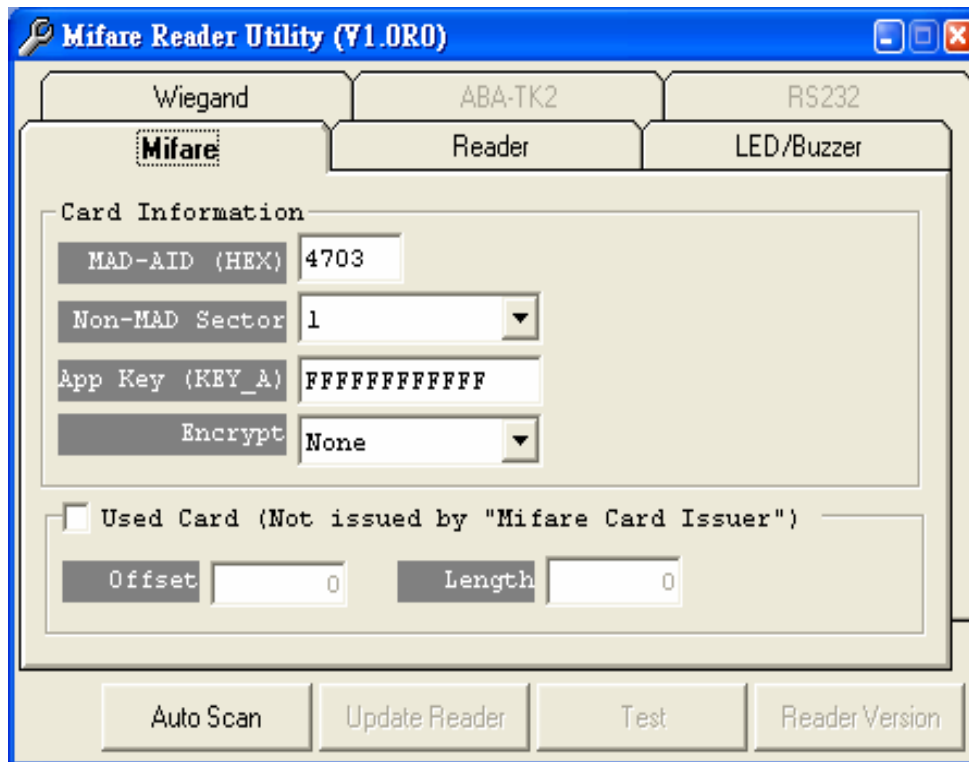


Software for SmaFinger Reader

- ◆ Mifare Reader Utility
(Software to Setup Reader)
- ◆ SmaFinger Card Issuer
(Software for Card Issuing)



Mifare Reader Utility



- Mifare Setting
- Reader Setting
- LED/Buzzer Setting
- Wiegand Setting
- ABA-TK2 Setting
- RS232 Setting



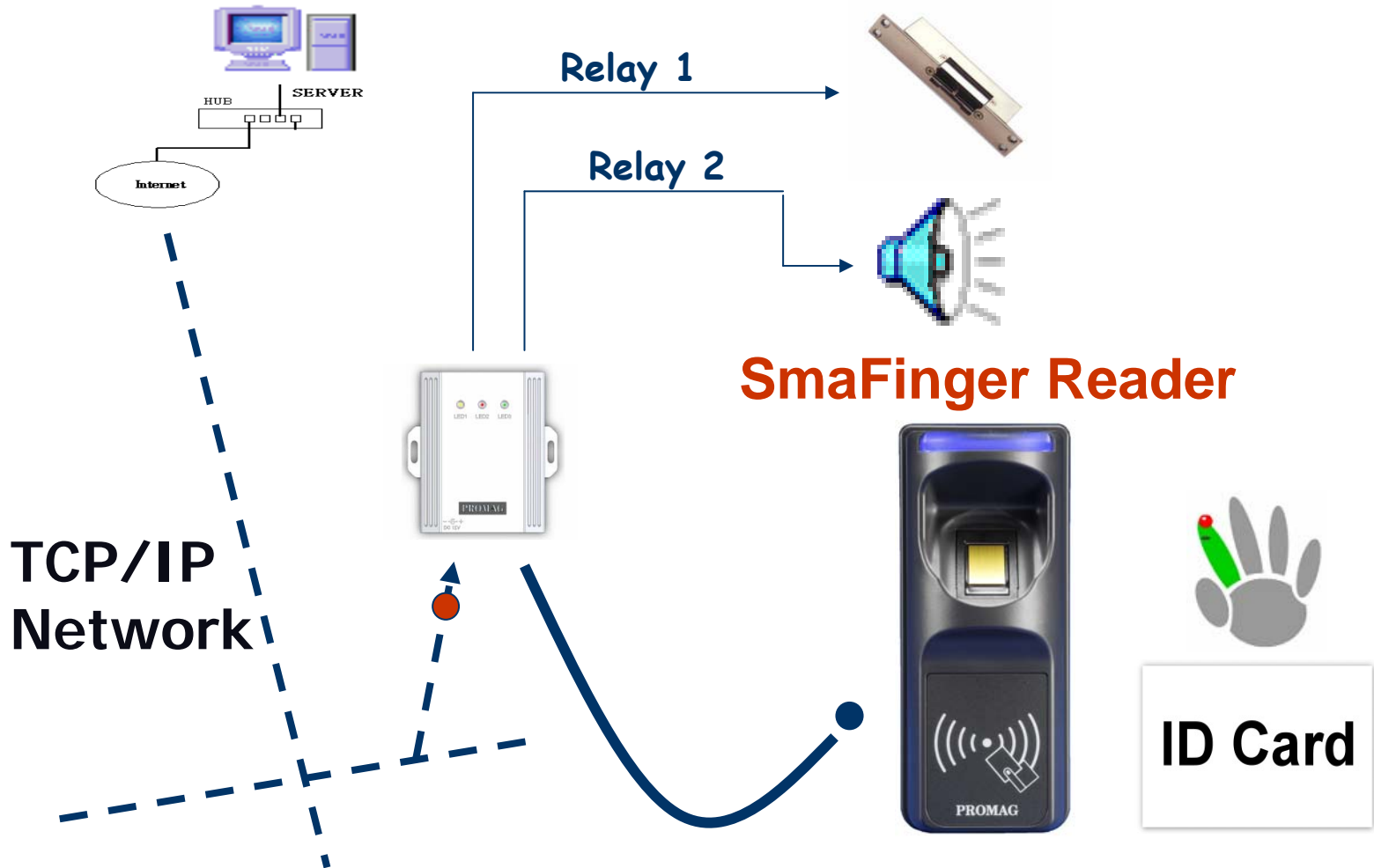
SmaFinger Card Issuer



- Format Card
- Input User Data
- Enroll Fingerprint
- Write To The Card



Application: Device Control Management



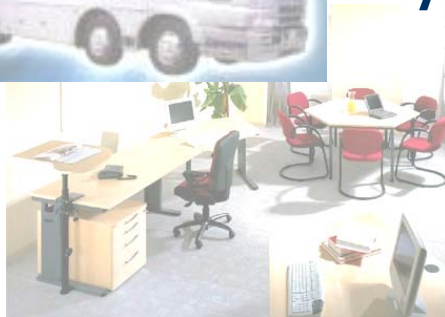
Application: Device Control Management



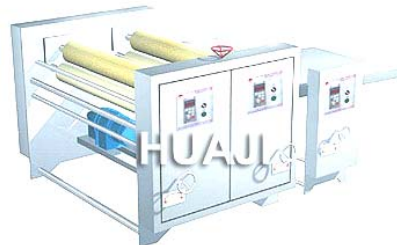
- ◆ ATM Security



- ◆ Armed Vehicle

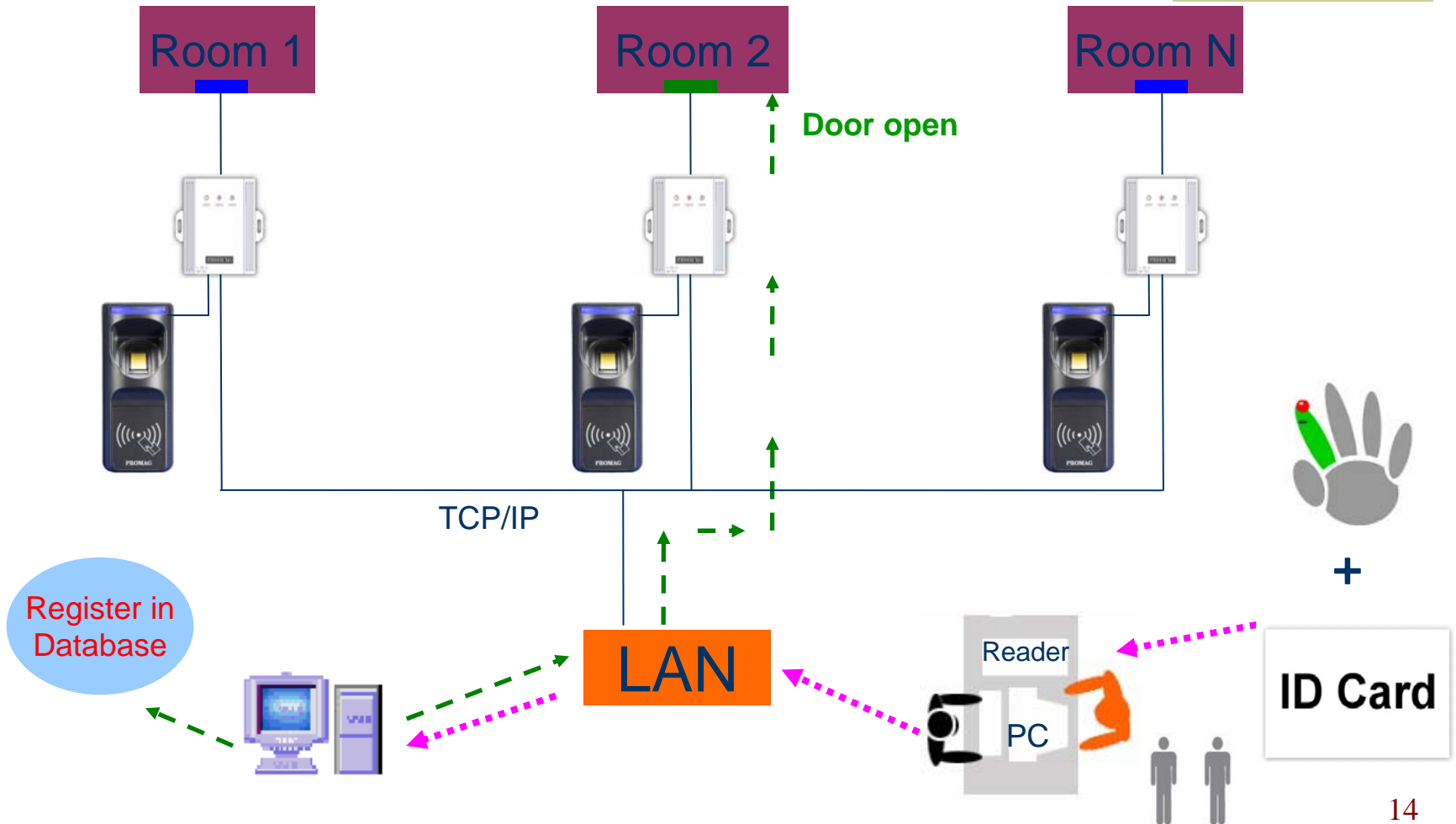


- ◆ Time Attendance



- ◆ Machine Authorization

Application: Access Management



Application: Access Management



- ◆ Warehouse



- ◆ Laboratory

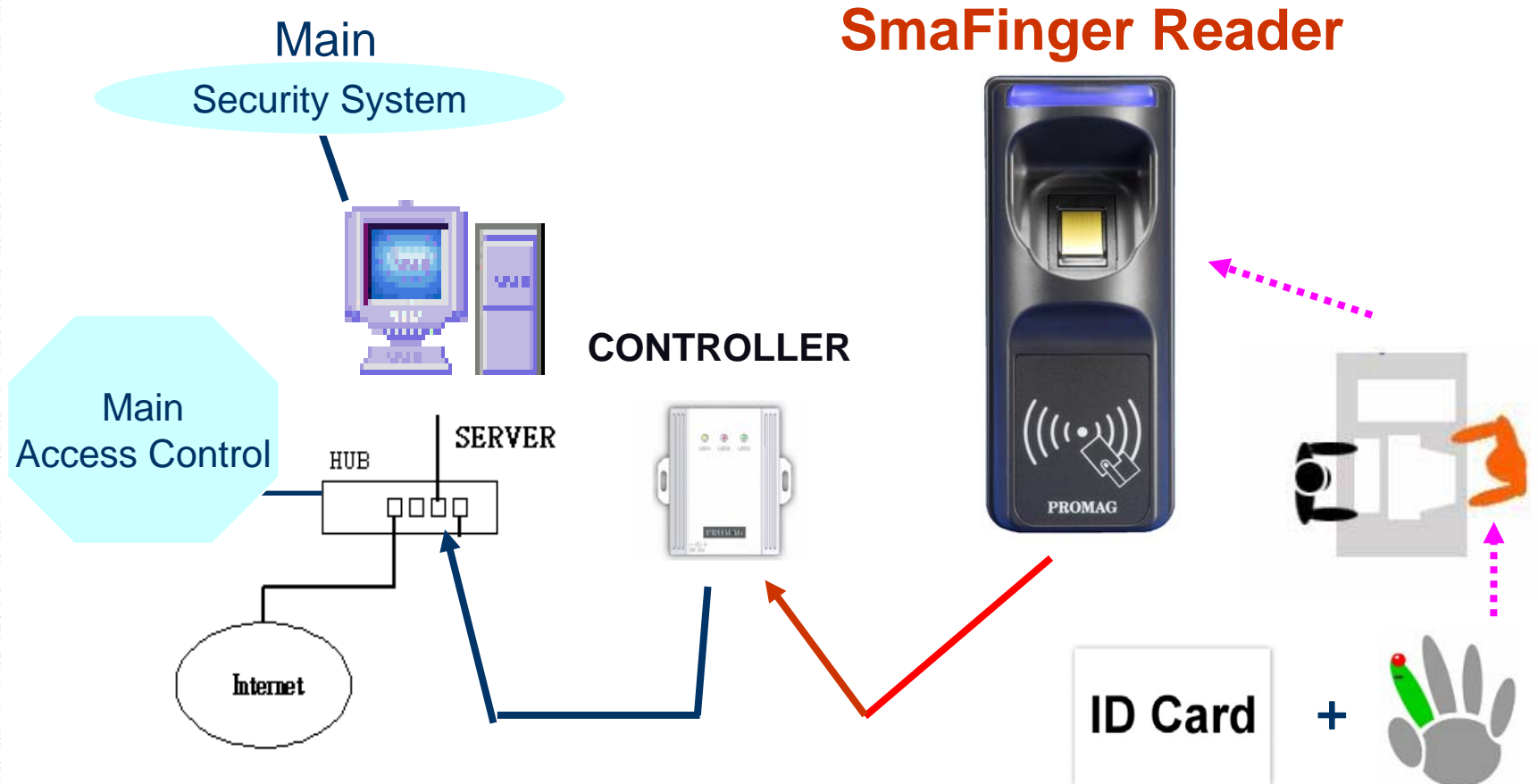


- ◆ Control Room



- ◆ Hospital Operation Room

Application: ID Verify Management



Application: ID Verify Management



- ◆ VIP Club



- ◆ Extra Visitor



- ◆ ID Identification

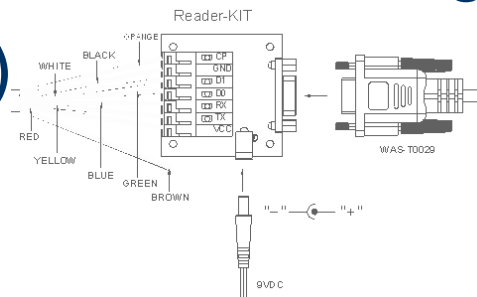


- ◆ Student Attendance



Start Kit

- SF600 SmaFinger Reader
- MF700KIT-20 Configure Kit For Reader
- SF600P Fingerprint Programmer
- PCR310U-40 SmaFinger Card Issue Programmer
- MFA01 Mifare Card (3PCS)





SmaFinger Specifications

Model No.		SF600	
Application		Standalone Mifare Sector Reader	
Access Mode	Card Only	Supported	
	Card + Fingerprint	Enroll Mode	No Need
		Fingerprint Capacity	Unlimited
		Fingerprint Validation	01:01
		Performance	Security
	Fingerprint Only	Enroll Mode	RS232 or Enroll Card
		Fingerprint Capacity	1900
		Fingerprint Validation	1:N
		Performance	Friendly
	Identification speed		<1 sec (1:1) <3 sec (1:N)
Max Card Template Capacity		2	
Mifare Card Type		1K /4K	
Card Format		For MAD1/MAD2 Only	
Configurable Interface		RS232 : 2400~57600 bps Wiegand: 26~128 bits ABA-TK2: 2~24 Digital Codes	
Mifare Read Distance		Max. 50mm	
Power Consumption		Max. 200mA @ DC12V	



PROMAG

Your Partner to Success



RFID-ENABLED TECHNOLOGY

